

High-Volume Traffic Generator Products

CATALOG



Table of Contents

3

Replicate Your Network in Action

4

Network Infrastructure
Traffic Generators

11

Application and Security
Traffic Generators

16

Network Impairment Generator

17

Modular Chassis

Replicate Your Network in Action with Keysight Test Traffic Generators

Your high-performance networks, devices, and services are what give you a competitive edge. But the evolution of technology is constant — it doesn't stop once the integration or transition phase is complete. That's why comprehensive, real-world testing brings unique benefits and solves complex problems that ensure you stay a step ahead. This fact is true whether you're an equipment manufacturer creating new devices or an organization that uses those devices to build and protect networks.

Whether you are conducting proof of concepts, planning and validating designs, or continuously testing into production, test traffic profiles need to reflect actual use in live networks. The ability to replicate your network in action means you can ensure performance, functionality, quality of experience (QoE), and security efficacy.

Take a look at Keysight's high-volume traffic generator test products. They enable you to validate across the stack, including networking protocols, services, applications, and cybersecurity. To ensure that your test results are meaningful and deliver the right insights, we offer the industry's highest-performance solutions with the most realistic application workloads, traffic mixes, dynamic payloads, and threat simulation and evasions. It is testing that replicates your network in action.



Network Infrastructure Traffic Generators

Keysight's routing, multiprotocol label switching (MPLS), software-defined networking (SDN), and data center-focused family of traffic generators will help you build a differentiated, cost-effective network infrastructure. These fixed chassis, appliances, and load modules are the industry's highest-density and highest-performance Ethernet Internet Protocol (IP) test solutions. They were all the world's first at 1G, 10G, 25G, 40G, 50G, 100G, and 400G speeds.

Our network infrastructure traffic generators validate the physical, data link, and network layers by interworking with Keysight's award-winning IxNetwork test application or web user interface.

- Test network performance, scalability, and interoperability.
- Validate network functions at internet scale.
- Ensure conformance to a broad range of industry standards and performance-benchmark specifications.



Ixia AresONE 400GE: highest-performance 400GE testing

To realize the cost efficiencies of 400GE, you must achieve the highest density in the smallest size so you can reduce power, cooling, cabling, and rack space. When it comes to testing 400GE equipment, optics, and cables, the same is true.

Keysight's Ixia AresONE fixed chassis is the 400GE test system of choice for validating the performance of networking equipment and qualifying optical transceivers and copper cables. It provides comprehensive Layer 2 and 3 traffic generation and protocol emulation, along with Layer 1 bit error rate (BER), forward error correction (FEC) statistics and symbol bit error correction distribution, and physical coding sublayer (PCS) / FEC symbol error injection stress testing.

Up to 13x protocol scale and performance over any other test system in the industry.

- Use up to eight 400GE ports that generate up to 3.2 Tbps of traffic each — all in the industry's-smallest, two-rack-unit fixed chassis.
- Choose QSFP-DD or OSFP interfaces, density, and performance options, including reduced and full functionality.
- Fan out each 400GE port to test 2 x 200GE, 4 x 100GE, or 8 x 50GE multirate Ethernet.
- Take advantage of first-to-market support for 4 x 100GE none-return-to-zero (NRZ) testing from a QSFP-DD PAM4 port using active electrical cable conversion technology.
- Test carrier-class traffic and protocol emulation with the only system that retains data-plane traffic scale from 1 x 400GE to 2 x 200GE and 4 x 100GE fan-outs.

Learn about 400GE network testing

These popular on-demand webinars offer a primer on [the new world of 400GE](#) and show you how to [eliminate FEC frame loss](#).

AresONE-S 400GE QSFP-DD
high-density, 16-port, full-performance
fixed chassis test system



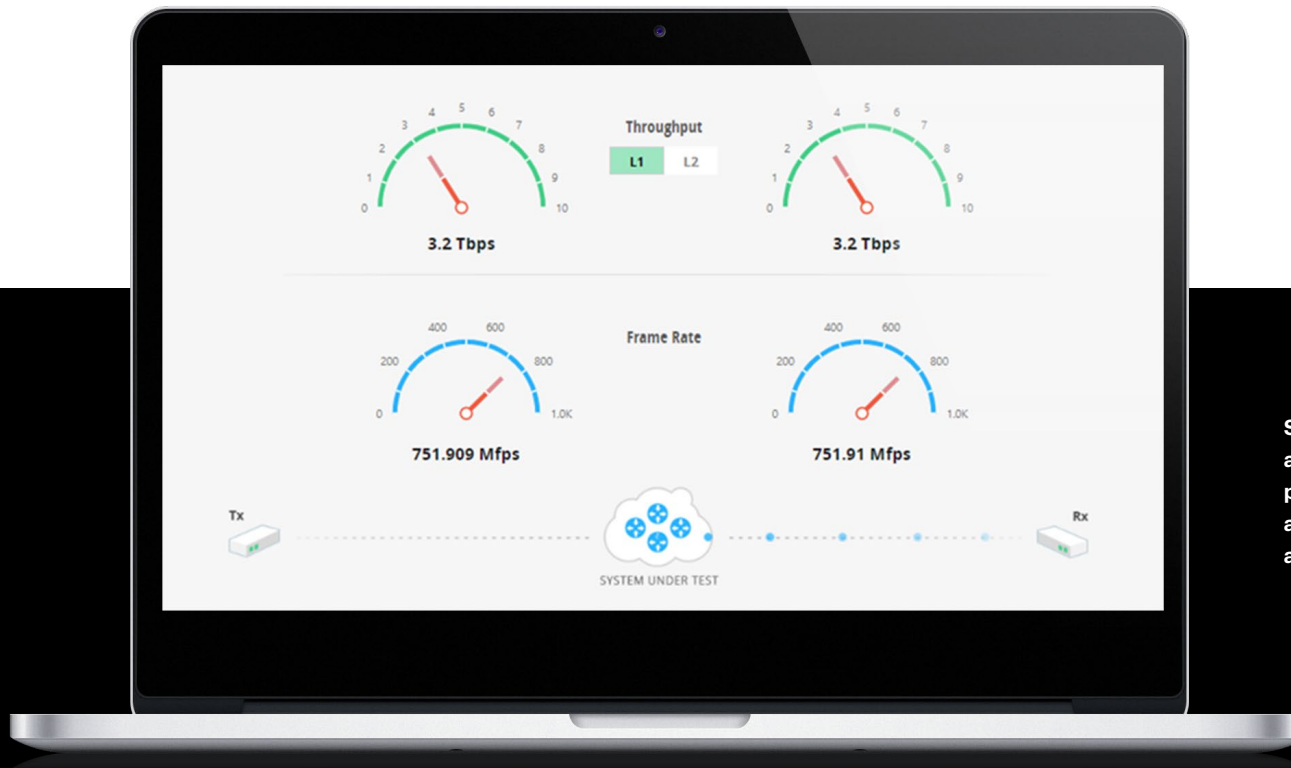
| Product name | Number of ports | Stream count per port | Physical interface | Variants | | | |
|-------------------------------------|---|---|--------------------|----------------|-------------|----------------------|----------------------------------|
| | | | | Physical ports | Performance | Model number | |
| AresONE-S 16-port | 16 x 400GE physical ports can fan-out ¹ to: PAM4 32 x 200GE 64 x 100GE 128 x 50GE NRZ 32 x 100GE 72 x 50GE 32 x 40GE 128 x 25GE 128 x 10GE | Full performance 400GE: 64 200GE: 64 100GE: 32 50GE: 16 40GE: 16 25GE: 16 10GE: 16 Reduced performance 400GE: 32 200GE: 32 100GE: 16 50GE: 8 40GE: 8 25GE: 8 10GE: 8 | QSFP-DD | 16 | Full | S400GD-16P-QDD | Get a Quote > |
| | | | | 16 | Reduced | S400GDR-16P-QDD | |
| | | | | 8 | Full | S400GD-16PHW-8P-QDD | |
| | | | | 8 | Reduced | S400GDR-16PHW-8P-QDD | |
| AresONE-S 8-port | 8 x 400GE physical ports can fan out ¹ to: PAM4 16 x 200GE 32 x 100GE 64 x 50GE NRZ 16 x 100GE 36 x 50GE 16 x 40GE 64 x 25GE 64 x 10GE | Full performance 400GE: 64 200GE: 64 100GE: 32 50GE: 16 40GE: 16 25GE: 16 10GE: 16 Reduced performance 400GE: 32 200GE: 32 100GE: 16 50GE: 8 40GE: 8 25GE: 8 10GE: 8 | QSFP-DD | 8 | Full | S400GD-8PHW-8P-QDD | Get a Quote > |
| | | | | 8 | Reduced | S400GDR-8PHW-8P-QDD | |
| | | | | 4 | Full | S400GD-8PHW-4P-QDD | |
| | | | | 4 | Reduced | S400GDR-8PHW-4P-QDD | |
| AresONE high-density | 8 x 400GE physical ports can fan out ¹ to: 16 x 200GE 32 x 100GE 64 x 50GE 4 x 400GE physical port models fan out to half the port density shown above | Full performance 400GE: 128 200GE: 128 100GE: 32 50GE: 16 Reduced performance 400GE: 32 200GE: 32 100GE: 16 50GE: 8 | QSFP-DD | 8 | Full | T400GD-8P-QDD | Get a Quote > |
| | | | | 8 | Reduced | T400GDR-8P-QDD | |
| | | | | 4 | Full | T400GD-4P-QDD | |
| | | | | 4 | Reduced | T400GDR-4P-QDD | |
| | | | OSFP | 8 | Full | T400GD-8P-OSFP | |
| | | | | 8 | Reduced | T400GDR-8P-OSFP | |
| | | | | 4 | Full | T400GD-4P-OSFP | |
| | | | | 4 | Reduced | T400GDR-4P-OSFP | |
| AresONE high-performance | 4 x 400GE physical ports can fan out ¹ to: 8 x 200GE 16 x 100GE 32 x 50GE | 400GE: 512 2 x 200GE: 512 4 x 100GE: 512 8 x 50GE: 256 | QSFP-DD | 4 | N/A | T400GD-4P-QDD | Get a Quote > |

¹ Using logical or physical fan-out optics and cables

Ixia UHD100T32: highest-density 100GE testing

With the mass deployment of 100GE in the data center, the cost per gigabit of traffic has become a key metric. With UHD100T32, Keysight reduces the cost of test by matching the port density, power, cooling, and form factor of data center switches. Now you can perform high-scale testing at manageable costs:

- Validate high-port-count devices for performance, scalability, and interoperability.
- Speed time to test with an easy-to-deploy, out-of-the-box solution.
- Conduct data center vendor selection tests for disaggregated white-box and network operating system deployments (including SONiC-based switches).
- Detect and debug data transmission errors for multiple speeds with line-rate 3.2 Tbps packet generation and analysis of received traffic.



Seamlessly connect to a continuous integration and deployment (CI/CD) environment using powerful representational state transfer application programming interface (REST API) automation and a web-based application

Ixia UHD100T32: highest-density 100GE testing

| Product | Number of ports | Stream count | Control plane | |
|---|--|--|--|----------------------------------|
| UHD100T32, perpetual | 32 x 100GE 64 x 50GE 32 x 40GE 128 x 25GE 128 x 10GE | 100GE: 16 50GE: 8 40GE: 16 25GE: 4 10GE: 4 | IPv4 / IPv6, BGP4 / BGP4+, OSPFv2 / v3, ISISv4 / v6, LAG | Get a Quote > |
| UHD100T32, base subscription | | 100GE: 1 50GE: 1 40GE: 1 25GE: 1 10GE: 1 | IPv4 / IPv6 | |
| UHD100T32, standard subscription | | 100GE: 16 50GE: 8 40GE: 16 25GE: 4 10GE: 4 | IPv4 / IPv6, BGP4 / BGP4+, OSPFv2 / v3, ISISv4 / v6, LAG | |



UHD100T32
Ultra-high density, 32-port test system

Ixia Novus: flexible + scalable mixed-speed testing

Evolving your network is never easy. In fact, just selecting the right networking gear is challenging. But to keep up with ever-growing needs and speeds, you must take the leap forward.

With Keysight, testing won't become your next big challenge. Keysight's Ixia Novus appliance and load modules give you the flexibility and scale needed to validate from 100 Mbps to 100GE technologies. They support the validation of OSI Layers 2 through 7 with Keysight's award-winning IxNetwork and IxLoad test solutions.

Our five- and three-speed models are the industry's only dual-PHY fiber and copper test solutions. They are meant for applications that require portability.

The Novus appliance and load modules deliver the options, speeds, and flexibility that today's network engineers need, all in a single test device.



Load module form factor

Load modules insert into Keysight's Ixia XGS chassis, available in 12-slot or 2-slot models. Novus QSFP28 100 / 50 / 40 / 25 / 10GE shown



Appliance form factor

Standalone, portable test system. Novus ONE PLUS shown

| Product name | Form factor | Number of ports | OSI-layer support | Users per load module | Physical interface | Variants | | | |
|---|-------------|--|----------------------------|-----------------------|-----------------------------------|--------------------|----------------|---|----------------------------------|
| | | | | | | Physical interface | Performance | Model number | |
| Novus QSFP28 100G/50G/25G | Load module | 8 x 100GE 16 x 50GE ¹ 8 x 40GE ¹ 32 x 25GE ¹ 32 x 10GE ¹ | Layers 2-3 using IxNetwork | 8 | QSFP28 | 8 | Full | NOVUS100GE8Q28+FAN | Get a Quote > |
| | | | | | | 8 | Midrange | NOVUS-M100GE8Q28+FAN | |
| | | | | | | 8 | Reduced | NOVUS-M100GE8Q28+FAN | |
| NOVUS 3-speed 32-port 10G/1G/100M SFP+ | Load module | 32 x 10GE 32 x 1GE 32 x 100M | | 16 | SFP+ | 32 | N/A | NOVUS10/1GE32S | Get a Quote > |
| Novus 5-speed 10G/5G/2.5G/1G/100M | Load module | 8 or 16 | Layers 2-3 using IxNetwork | 8 to 16 | Dual-PHY SFP+ and 10GBASE-T RJ-45 | 16 | Full | NOVUS10/5/2.5/1/100M16DP | Get a Quote > |
| | | | | | | 8 | Full | NOVUS10/5/2.5/1/100M8DP | |
| | | | | | | 16 | Reduced | NOVUS10/5/2.5/1/100M16DP-R | |
| | | | | | | 8 | Reduced | NOVUS10/5/2.5/1/100M8DP | |
| Novus 3-speed 10G/1G/100M | Load module | 8 or 16 | Layers 2-3 using IxNetwork | 8 to 16 | Dual-PHY SFP+ and 10GBASE-T RJ-45 | 16 | 10 / 1G / 100M | NOVUS10/1GE16DP | Get a Quote > |
| | | | | | | 8 | 10 / 1G / 100M | NOVUS10/1GE16DP | |
| Novus-NP 10G/1G/100M | Load module | 8 or 16 | Layers 4-7 using IxLoad | 8 to 16 | Dual-PHY SFP+ and 10GBASE-T RJ-45 | 16 | 1G / 100M | NOVUS1GE16D | Get a Quote > |
| | | | | | | 16 | N/A | NOVUS-NP10/1GE16DP | |
| Novus ONE Plus, 3-speed 10G/1G/100M | Appliance | 4, 8, or 16 | Layers 2-3 using IxNetwork | 8 to 16 | Dual-PHY SFP+ and 10GBASE-T RJ-45 | 8 | N/A | NOVUS-NP10/1GE16DP | Get a Quote > |
| | | | | | | 16 | N/A | Novus ONE PLUS 10/1GE16DP | |
| Novus ONE Plus, 5-speed 10G/5G/2.5G/1G/100M | Appliance | 4, 8, or 16 | Layers 2-3 using IxNetwork | 8 to 16 | Dual-PHY SFP+ and 10GBASE-T RJ-45 | 8 | N/A | Novus ONE PLUS 10/1GE8DP | Get a Quote > |
| | | | | | | 4 | N/A | Novus ONE PLUS 10/1GE4DP | |
| | | | | | | 16 | N/A | Novus ONE PLUS 10/5/2.5/1GE8DP | |
| | | | | | | 8 | N/A | Novus ONE PLUS 10/5/2.5/1GE8DP | |
| Novus ONE Plus, 5-speed 10G/5G/2.5G/1G/100M | Appliance | 4, 8, or 16 | Layers 2-3 using IxNetwork | 8 to 16 | Dual-PHY SFP+ and 10GBASE-T RJ-45 | 4 | N/A | Novus ONE PLUS 10/5/2.5/1GE8DP | Get a Quote > |
| | | | | | | 8 | N/A | Novus ONE PLUS 10/5/2.5/1GE8DP | |
| Novus SFP28 / QSFP28 high-density 100G/25G/10G | Load module | 8 | Layers 2-3 using IxNetwork | 8 | SFP28 and QSFP28 | 8 | N/A | NOVUS-S 10/25GE8SFP28, 100GE option, time-sensitive networking option | Get a Quote > |

¹ Using logical or physical fan-out optics and cables

Application and Security Traffic Generators

Keysight's application-focused family of load modules and standalone appliances includes Ixia CloudStorm, Ixia PerfectStorm, and Ixia Novus-NP. They are the industry's most scalable solutions for testing converged multiplay services, application delivery, and network security platforms for wired and wireless networks.

Our test products deliver the insights needed to balance cybersecurity with application performance, optimize Transport Layer Security (TLS) encryption policies, and identify performance and interoperability issues.

Ultra-high-scale test solution

Novus-NP is a high-density dual-PHY tri-speed (10G / 1G / 100M) solution for ultra-high-scale and performance testing with 40 Gbps of application traffic.



CloudStorm 100G / 25G / 40G / 10G

3x application and 4x TLS emulation scale over any other test system in the industry



PerfectStorm ONE 10 / 40GE

Enterprise scalability in a compact form factor for use with constrained lab space and power availability



Ixia CloudStorm: cloud-scale application and security testing

CloudStorm delivers 3x application and 4x TLS emulation scale over any other test system in the industry. With two QSFP28 ports and being multispeed capable — 10 / 25 / 40 / 50 / 100GE — CloudStorm helps network equipment manufacturers shorten their development cycles. It also helps enterprises and data center operators find the right balance between mitigating security risks and delivering high end-user application performance.

| Product name | Number of ports | Performance | Application support | Physical ports | Variants | | |
|--------------------------|---|--|-------------------------|----------------|---------------------------|------------------------|----------------------------------|
| | | | | | Speeds | Model | |
| CloudStorm Fusion | 2 x 100GE 4 x 50GE ¹ 2 x 40GE ² 8 x 25GE ¹ 8 x 10GE ¹ | <ul style="list-style-type: none"> Enterprise application mix: 198 Gbps HTTP bidirectional throughput: 200 Gbps HTTP connection rate: 3.5M CPS TLS throughput: 95 Gbps | BreakingPoint IxLoad | 2 | 100GE | 944-1231 CS100GE2Q28NG | Get a Quote > |
| | | | | | 100 / 50 / 40 / 25 / 10GE | 947-5101 CS100GE8NGALL | |
| | | | | | 40 / 25 / 10GE | 947-5102 CS25GE8Q28NG | Get a Quote > |
| | | | | | 40 / 10GE | 947-5103 CS40GE2Q28NG | Get a Quote > |
| | | | | | 10GE | 947-5104 CS10GE8Q28NG | |
| CloudStorm | 2 x 100GE 4 x 50GE ¹ 2 x 40GE ² 8 x 25GE ¹ 8 x 10GE ¹ | <ul style="list-style-type: none"> HTTP bidirectional throughput: 192 Gbps HTTP connection rate: 4.5M CPS TLS throughput: 92 Gbps | IxLoad | 2 | 100GE | 944-1232 CS100GE2Q28 | Get a Quote > |
| | | | | | 100 / 50 / 40 / 25 / 10GE | 947-5105 CS100GE8ALL | |
| | | | | | 40 / 25 / 10GE | 947-5106 CS25GE8Q28 | Get a Quote > |
| | | | | | 40 / 10GE | 947-5107 CS40GE2Q28 | Get a Quote > |
| | | | | | 10GE | 947-5108 CS10GE8Q28 | |

¹ Using logical or physical fan-out optics and cables

² Through speed-down

Ixia Perfectstorm: enterprise-scale application and security testing

PerfectStorm is a scalable solution for testing converged multiplay services, application delivery, and network security platforms for wired and wireless networks. A flexible pay-as-you-grow model allows you to spread the investment over time to lower the initial capital expenditure or add performance when required.

| Product name | Form factor | Performance ² | Number of ports | Physical interface | Application support | Variants | | | |
|--|-------------|--|--|--------------------|--------------------------------------|--------------------------------------|--|---|--|
| | | | | | | Physical ports | Speeds | Model number | |
| PerfectStorm Fusion 10 / 40GE | Load module | Enterprise application mix: 76 Gbps | 2 x 40GE 8 x 10GE ¹ | QSPF+ | BreakingPoint IxLoad | 2 | 10 / 40GE | PerfectStorm Fusion 40/10 GigE 2-port QSFP+ | Get a Quote > |
| IxLoad | | | | | PerfectStorm 40/10 GigE 2-port QSFP+ | | | | |
| PerfectStorm ONE Fusion 10 / 40GE | Appliance | | | | BreakingPoint IxLoad | | | PerfectStorm ONE Fusion 40/10 GigE 2-port QSFP+ | Get a Quote > |
| PerfectStorm ONE 10 / 40GE | | | | | IxLoad | | | Perfect Storm ONE 40/10 GigE 2-port QSFP+ | |
| PerfectStorm Fusion 1 / 10GE | Load module | HTTP bidirectional throughput: 80 Gbps | 8 x 10GE 4 x 10GE 2 x 10GE 8 x 1GE | SFP+ | BreakingPoint IxLoad | 8 | 10GE | PerfectStorm Fusion 10GE 8-port SFP+ | Get a Quote > |
| PerfectStorm 1 / 10GE | | | | | | | | HTTP connection rate: 1.5 M CPS | |
| | | | | | 2 | PerfectStorm Fusion 10GE 2-port SFP+ | | | |
| PerfectStorm ONE Fusion 1 / 10GE | | | | | Appliance | TLS throughput: 20 Gbps | 8 x 10GE 8 x 10GE 4 x 10GE 2 x 10GE 8 x 1GE 4 x 1GE | SFP+ | |
| | 4 | PerfectStorm Fusion 10GE 4-port SFP+ | | | | | | | |
| PerfectStorm ONE 1 / 10GE | Appliance | TLS throughput: 20 Gbps | 8 x 10GE 8 x 10GE 4 x 10GE 2 x 10GE 8 x 1GE 4 x 1GE | SFP+ | IxLoad | 8 | 10GE | PerfectStorm Fusion 10GE 2-port SFP+ | |
| | | | | | | | | 4 | |
| PerfectStorm ONE 1 / 10GE | Appliance | TLS throughput: 20 Gbps | 8 x 10GE 8 x 10GE 4 x 10GE 2 x 10GE 8 x 1GE 4 x 1GE | SFP+ | IxLoad | 8 | 10GE | PerfectStorm ONE Fusion 10GE 8-port SFP+ | |
| | | | | | | | | 4 | PerfectStorm ONE Fusion 10GE 4-port SFP+ |
| | | | | | | | | 2 | PerfectStorm ONE Fusion 10GE 2-port SFP+ |
| | | | | | | | | 8 | PerfectStorm ONE Fusion 10GE 8-port SFP+ |
| PerfectStorm ONE 1 / 10GE | Appliance | TLS throughput: 20 Gbps | 8 x 10GE 8 x 10GE 4 x 10GE 2 x 10GE 8 x 1GE 4 x 1GE | SFP+ | IxLoad | 4 | 10GE | PerfectStorm ONE Fusion 10GE 4-port SFP+ | |
| | | | | | | | | 8 | PerfectStorm ONE Fusion 10GE 8-port SFP+ |
| | | | | | | | | 2 | PerfectStorm ONE Fusion 10GE 2-port SFP+ |
| | | | | | | | | 8 | PerfectStorm ONE Fusion 10GE 8-port SFP+ |
| PerfectStorm ONE 1 / 10GE | Appliance | TLS throughput: 20 Gbps | 8 x 10GE 8 x 10GE 4 x 10GE 2 x 10GE 8 x 1GE 4 x 1GE | SFP+ | IxLoad | 8 | 10GE | PerfectStorm ONE Fusion 10GE 4-port SFP+ | |
| | | | | | | | | 4 | PerfectStorm ONE Fusion 10GE 8-port SFP+ |
| | | | | | | | | 2 | PerfectStorm ONE Fusion 10GE 2-port SFP+ |
| | | | | | | | | 8 | PerfectStorm ONE Fusion 10GE 8-port SFP+ |
| PerfectStorm ONE 1 / 10GE | Appliance | TLS throughput: 20 Gbps | 8 x 10GE 8 x 10GE 4 x 10GE 2 x 10GE 8 x 1GE 4 x 1GE | SFP+ | IxLoad | 4 | 10GE | PerfectStorm ONE Fusion 10GE 4-port SFP+ | |
| | | | | | | | | 8 | PerfectStorm ONE Fusion 10GE 8-port SFP+ |
| | | | | | | | | 2 | PerfectStorm ONE Fusion 10GE 2-port SFP+ |
| | | | | | | | | 8 | PerfectStorm ONE Fusion 10GE 8-port SFP+ |
| PerfectStorm ONE 1 / 10GE | Appliance | TLS throughput: 20 Gbps | 8 x 10GE 8 x 10GE 4 x 10GE 2 x 10GE 8 x 1GE 4 x 1GE | SFP+ | IxLoad | 8 | 1GE | PerfectStorm ONE Fusion 10GE 8-port SFP+ | |
| | | | | | | | | 4 | PerfectStorm ONE Fusion 10GE 4-port SFP+ |
| | | | | | | | | 2 | PerfectStorm ONE Fusion 10GE 2-port SFP+ |
| | | | | | | | | 8 | PerfectStorm ONE Fusion 10GE 8-port SFP+ |
| PerfectStorm ONE 1 / 10GE | Appliance | TLS throughput: 20 Gbps | 8 x 10GE 8 x 10GE 4 x 10GE 2 x 10GE 8 x 1GE 4 x 1GE | SFP+ | IxLoad | 4 | 1GE | PerfectStorm ONE Fusion 10GE 4-port SFP+ | |
| | | | | | | | | 8 | PerfectStorm ONE Fusion 10GE 8-port SFP+ |
| | | | | | | | | 2 | PerfectStorm ONE Fusion 10GE 2-port SFP+ |
| | | | | | | | | 8 | PerfectStorm ONE Fusion 10GE 8-port SFP+ |

¹ Using logical or physical fan-out optics and cables

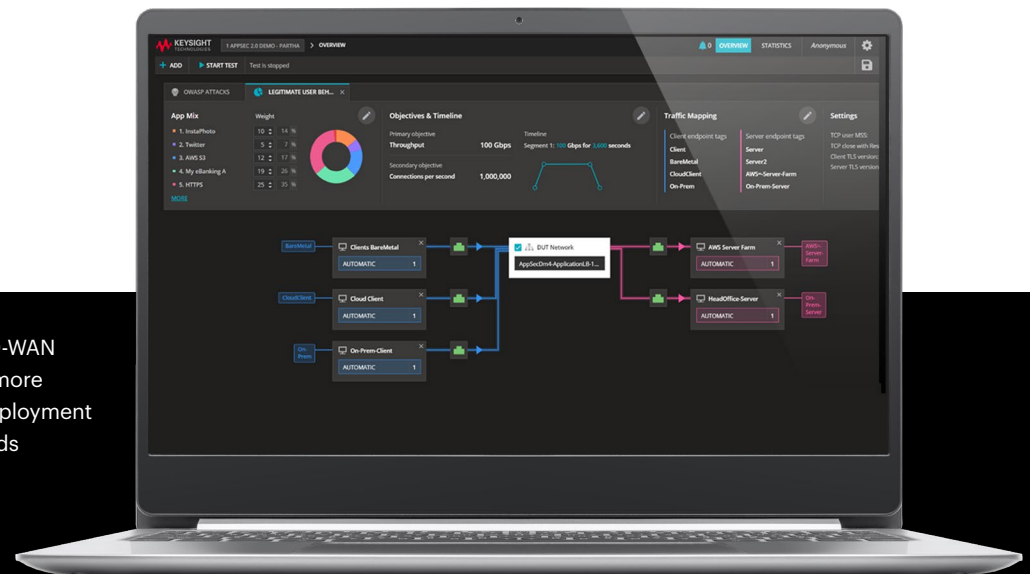
² Maximum performance shown; PerfectStorm variants with reduced number of ports or lower speeds provide lower performance

Software-based applications and security testing

When migrating to the cloud, organizations need to deliver performance that is the same as — or better than — traditional networks. We offer virtualized traffic generator solutions for application and security testing that validate virtual compute and network elements.

| Software | Test type | Description | |
|---|---|---|----------------------------------|
| CyPerf | Distributed, elastic performance and security testing | Cloud-native, lightweight agents deployed across physical and cloud environments deliver unprecedented insights to validate cloud and SD-WAN migration, discover undisclosed third-party infrastructure issues, and validate elastic scalability of cloud infrastructures and security architectures. | Get a Quote > |
| IxLoad Virtual Edition (VE) | Virtualized multiplay application performance testing | Converged multiplay service emulations provide functional and performance testing of virtualized assets, including servers, firewalls, deep packet inspection (DPI) devices, load balancers, and converged network adapters (CNAs). Use it to ensure the QoE for real-time, business-critical applications. | Get a Quote > |
| BreakingPoint Virtual Edition (VE) | Virtualized application and security testing | Real-world application and threat emulation delivers complete performance and security testing. Use it to validate network security posture and optimize virtual or physical network security devices in private or public cloud environments. | Get a Quote > |

Use CyPerf to validate cloud and SD-WAN migration in half the time and with more fidelity by replicating distributed deployment environments with realistic workloads



Network Impairment Generator

Ixia Network Emulator II — real-world network impairment

Many organizations overlook the importance of emulating realistic and worst-case network scenarios in the lab. Failure to test variables such as application performance, effect of delay, and fail-over protection can have serious real-world implications.

Keysight's Ixia Network Emulator II is a precision test instrument for 10GE, 1GE, and 100MbE Ethernet impairment that enables you to accurately emulate network conditions that occur over live local and wide area networks. With Keysight's network emulation, you can validate and test the performance of new hardware, protocols, and applications in a controlled lab environment to identify the following:

- application performance across distributed data centers
- effects of delay on application and network performance
- efficacy of data center backup

Looking for high-speed network emulation?

In-depth testing that includes substantial packet delay and traditional network impairments is now available for 100 / 50 / 40 / 25GE technologies.

Network Emulator II - Ethernet 10GE, 1GE, and 100MbE



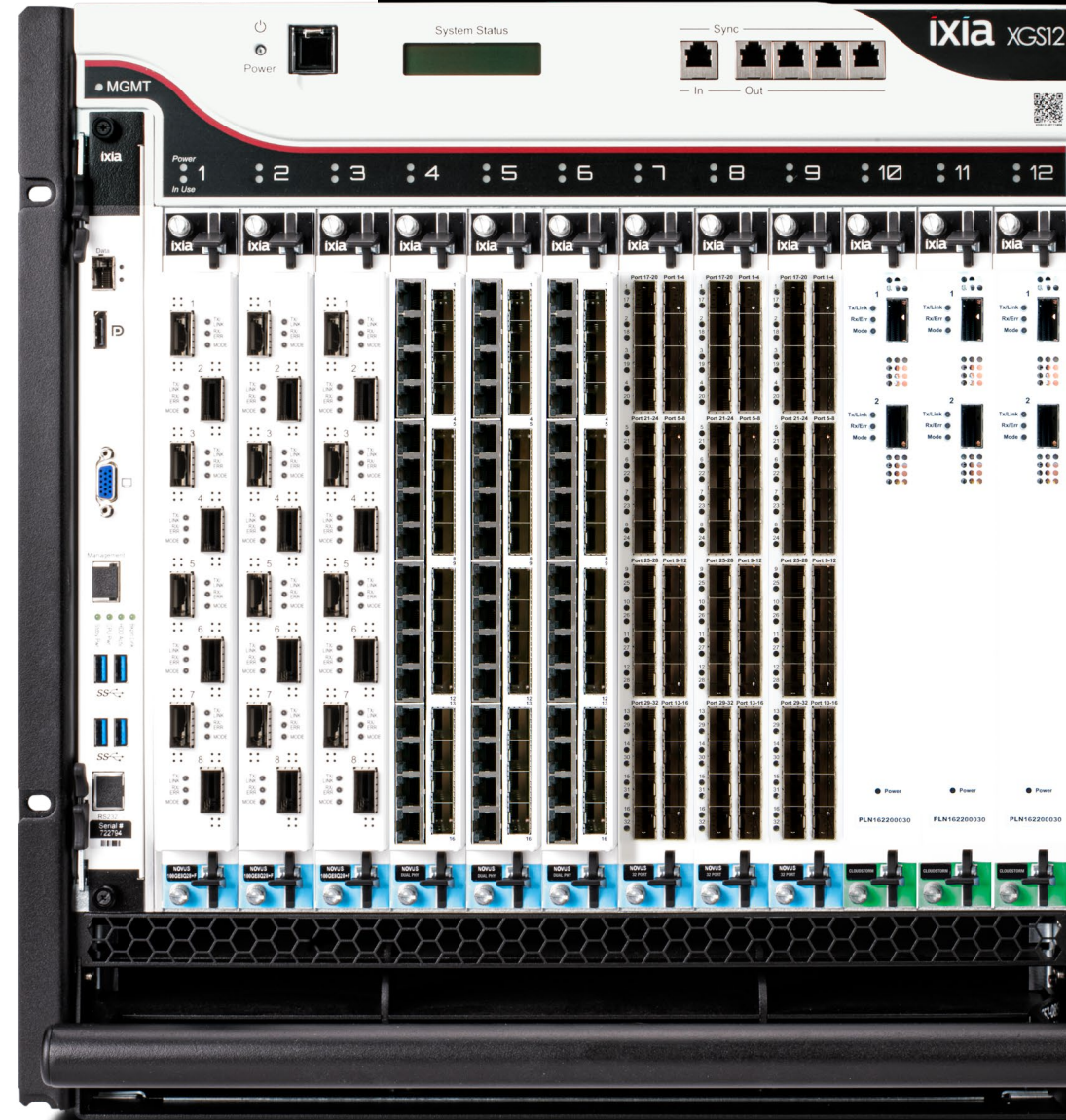
Modular Chassis

Ixia XGS2 and XGS12 chassis

Keysight's Ixia chassis make our modular test systems possible, providing the power and performance necessary for portable to massive-scale testing of Layers 2 to 7. All XGS chassis have a front-to-back airflow system to ensure that load modules operate efficiently. And true modular construction maximizes serviceability as each major system component is self-contained and easily removed or installed in the field.

Each load module is hot-swappable, allowing for a highly flexible testing environment. This chassis family supports Novus, PerfectStorm, and CloudStorm load modules, providing seamless integration with existing Keysight test systems.

| Product name | Form factor | Slots | Rack units | |
|--------------|-------------------------------|-------|------------|----------------------------------|
| XGS12 | Rackmount | 12 | 11 | Get a Quote > |
| XGS2 | Benchtop (rackmount optional) | 2 | 3 | Get a Quote > |





Keysight enables innovators to push the boundaries of engineering by quickly solving design, emulation, and test challenges to create the best product experiences. Start your innovation journey at www.keysight.com.

This information is subject to change without notice.
© Keysight Technologies, 2018 – 2023, Published in USA, March 13, 2023, 7121-1065.EN