

# BigID Data Lifecycle Management

Automated Data Lifecycle Management for Efficiency, Accuracy, Compliance & Trust

## BigID Data Lifecycle Management Benefits



### Automate

to efficiently apply consistent data retention policies to all data



### Eliminate

risk and expense of storing expired sensitive data



### Maintain

compliance with regulatory requirements



### Protect

trusted relationships with employees and customers

## Manage data lifecycle for all data, everywhere.

Companies retain all kinds of data, but retention and expiration rules vary by the type and owner of the information. Country or state-specific regulations dictate how long an organization needs to retain different types of information. An organization may also need to retain some data for a legal hold that would supersede a country or data-type retention regulation.



### To comply with data retention requirements, data teams need to know:

- What data do we have?
- What regulations apply to the information that we are responsible for?
- Does any of the expiring information need to be retained for a legal hold?
- How do we take action to save or destroy records to remain compliant?



### BigID offers an automated solution for Data Lifecycle Management.

- Discover and classify all data to know what you have.
- Set retention policies and identify what data to retain or delete
- Automate complex policy management with Retention, Remediation, and Deletion
- Audit for compliance and report KPIs



Discover,  
Identify, &  
Classify Data



Set Data  
Retention  
Policies



Apply  
Policies to  
Data



Remediate



Delete

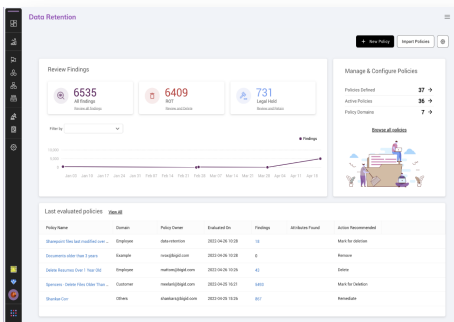


Audit and  
Report

# 3 Steps to Retain and Delete Data to Reduce Risk with BigID Data Lifecycle Management.

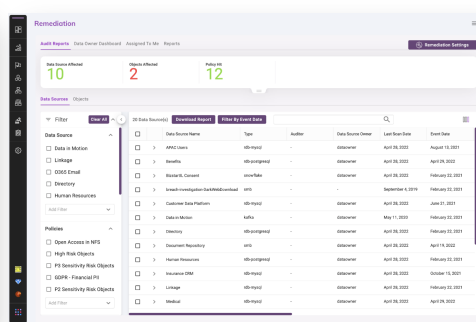


## BigID's Data Lifecycle Management



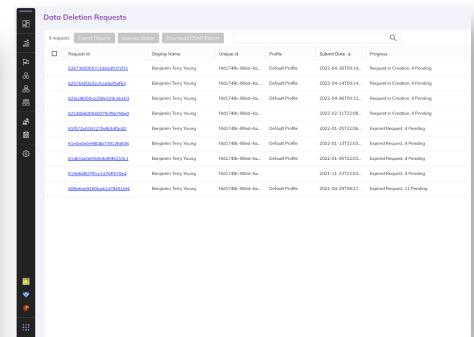
### Data Retention

- Apply consistent data retention management policies across all data types and all data sources
- Evaluate rules and connect to data to identify what data to retain or delete
- Manage priority policies for legal exceptions



### Data Remediation

- Remediate high value data to delete or retain
- Assign owners and priority dates
- Leverage workflow integration with enterprise solutions



### Data Deletion

- Delete data to comply with data privacy regulations & business policies
- Create approval workflow with assigned experts and data owners
- Maintain an audit trail and report KPIs